

Gering, Scotts Bluff County, NE

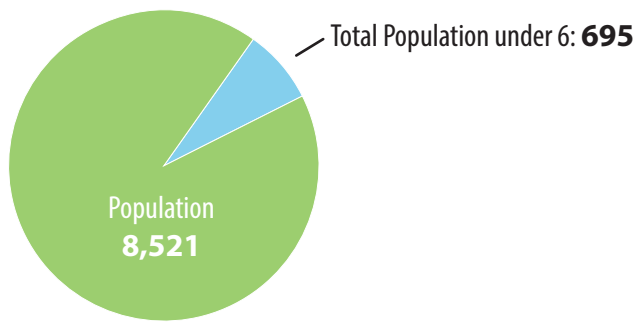
Child Care Landscape



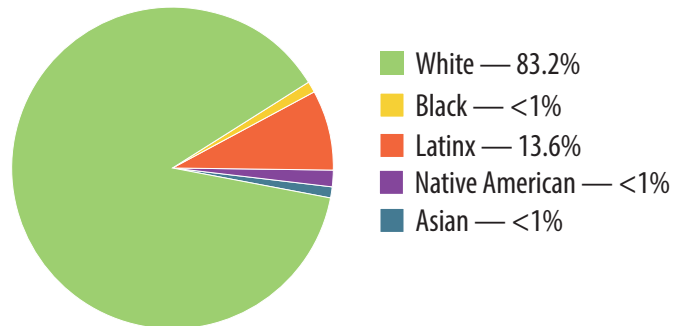
The Communities for Kids initiative was created in response to community requests for assistance with shortages of high-quality early care and education programs – shortages that both impact children’s optimal development and pose a challenge for communities hoping to attract and retain the viable workforces they need to thrive.

Communities for Kids partners with communities’ public and private entities to support and coordinate planning for access to high-quality early care and education for all children birth through age eight. These partnerships are customized to address each community’s unique assets and needs – so each community can grow and prosper well into the future.

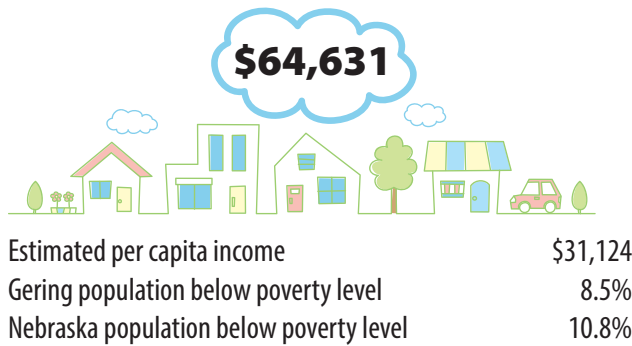
Gering Demographics



Other Demographics



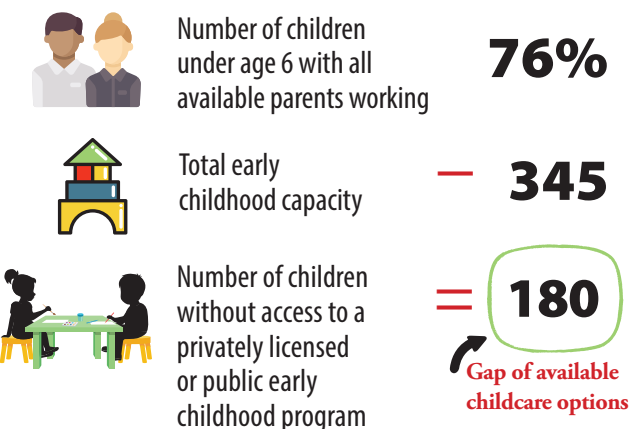
Median Household Income



Public Early Childhood Programs*

Public Pre-Kindergarten programs	90
Head Start	48
Total Public Early Childhood Spots	138

Quality Childcare Availability



Public Early Childhood Programs

Licensed In-Home Childcare Providers	7
Licensed Center-Based Childcare Providers	4
Licensed Preschool Providers	1
Total Capacity	351

Comparison Rates and Outcomes

	GERING	ALL NEBRASKA
Mobility	5.03%	4.22%
Free/Reduced Lunch	38%	41%
High School Graduation Rate	91%	87%

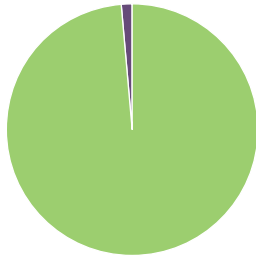
nep.education.ne.gov

*Locally provided data

Community Assessment Group information

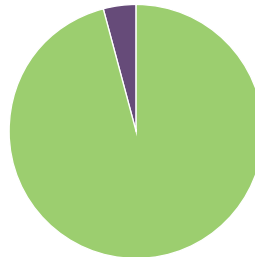
The Gering Communities for Kids team worked together to develop a survey to address the current and future needs of early childhood care and learning opportunities in the community. Surveys were provided online via SurveyMonkey in Fall of 2020. A total of 184 surveys were collected.

How important is the availability of high-quality child care to the future growth and development of our community?



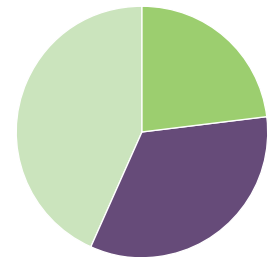
Very Important - **98.87%**
 Important - **0%**
 Somewhat important - **1.13%**
 Not important - **0%**
 N/A - **0%**
 Answered: 177 Skipped: 7

How important is it to you that child care is affordable and accessible to all children?



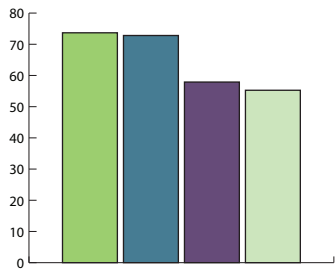
Very Important - **96.05%**
 Important - **0%**
 Somewhat important - **3.95%**
 Not important - **0%**
 Answered: 177 Skipped: 7

How difficult was it to find the type of child care arrangements you wanted when you needed it?



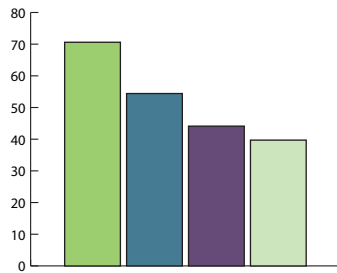
Very difficult - **23.08%**
 Difficult - **0%**
 Somewhat difficult - **33.65%**
 Not difficult - **43.27%**
 Answered: 104 Skipped: 80

What are the most important qualities you would look for to choose a child care provider if/when you needed one? Choose top 3 qualities you would look for.



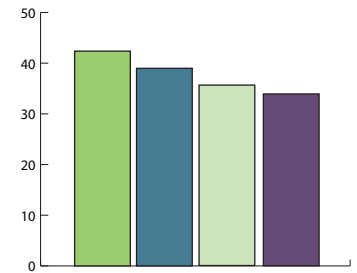
Children are in a learning environment - **73.68%**
 Cleanliness/safety needs are being met - **72.81%**
 I can communicate with the provider regarding my child's care - **57.89%**
 Child care is available during the hours and days I need care - **55.26%**
 Answered: 114 Skipped: 70
Note: Respondents were able to select more than one option

Choose the top three (3) priorities that are most important to you when choosing preschool in Gering.



Social-emotional support (showing care and compassion for child's social needs) - **70.59%**
 Developmentally appropriate (activities appropriate to the age of the child) - **54.41%**
 Positive reputation/references - **44.12%**
 Certified Teachers (4 year degrees) - **39.71%**
 Answered: 68 Skipped: 116
Note: Respondents were able to select more than one option

Choose up to three (3) items that you feel are barriers when selecting a preschool in Gering.



Cost - **42.37%** Not enough full-day preschool options - **35.59%**
 Quality - **38.98%** Enrollment openings - **33.9%**
 Answered: 59 Skipped: 125
Note: Respondents were able to select more than one option

"Being a parent can feel lonely and be hard at times. Also, it is very difficult to get my 3-year-old daughter the proper environment with her peers she needs for social development other than taking her to a daycare that, sadly, I cannot afford."

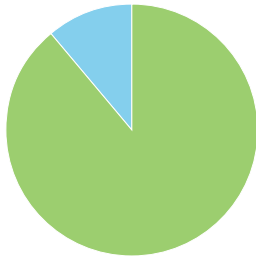
"As a law enforcement officer, community services are vital to ensuring the health and safety of children. Finding quality child care facilities can be difficult if you don't know others who can share their experiences."

"I really struggled when my children were of child care age, there was a big gap in providers for babies (under 18 months). The waiting list was huge, and I had to get on a provider list in my first trimester."

Gering, Scotts Bluff County, Nebraska

The Gering Communities For Kids team worked together to develop an Organization/Business survey to address the current and future needs for early childhood care and and education programs from the perspective of employers. Surveys were provided online via Survey Monkey and a total of nine (9) surveys were collected.

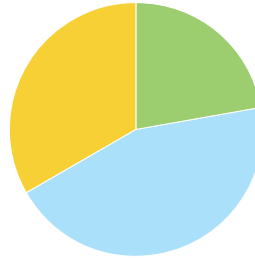
How important is the availability of child care to you as an employer?



Very Important - **89.89%**
Somewhat important - **11.11%**
Not important - **0%**

Answered: 9 Skipped: 0

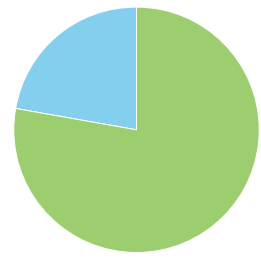
Do you believe your employees have access to the child care they need?



Yes - **22.22%**
No - **44.44%**
Unsure - **33.33%**

Answered: 9 Skipped: 0

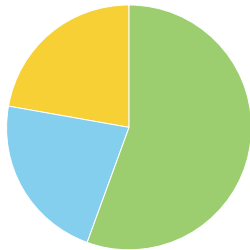
In the last 12 months, has a lack of child care caused your employees to be tardy, miss work, or caused a distraction at work?



Yes - **77.78%**
No - **22.22%**
Unsure - **0%**

Answered: 9 Skipped: 0

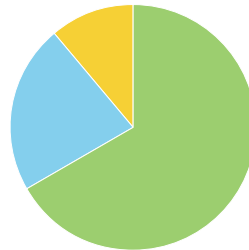
Has a lack of child care ever affected your ability to hire your candidate of choice?



Yes - **55.56%**
No - **22.22%**
Unsure - **22.22%**

Answered: 9 Skipped: 0

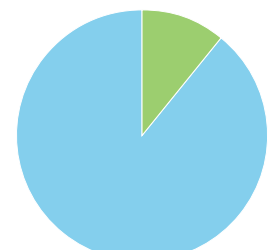
Has child care availability ever affected your ability to retain employees?



Yes - **66.67%**
No - **22.22%**
Unsure - **11.11%**

Answered: 9 Skipped: 0

Is child care for your employees part of the business plan or one of your business priorities?



Yes - **11.11%**
No - **88.89%**

Answered: 9 Skipped: 0

Learn more about Gering Communities for Kids at our website:
<https://www.geringc4k.com>